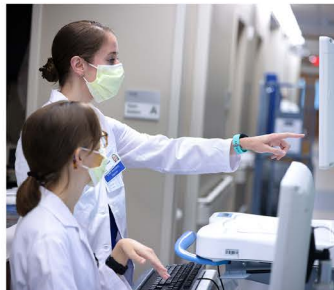
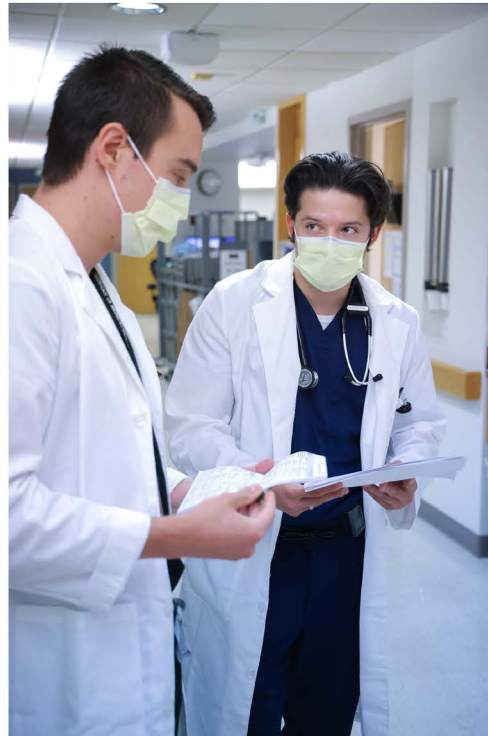


Resident Research Day 2024

DUKE INTERNAL MEDICINE RESIDENCY PROGRAM



Friday, May 10, 2024 | 7:45 a.m. - 10:00 a.m.

Medicine Grand Rounds | 6th Floor Trent Semans Center

AGENDA

7:45am - 8am

Coffee

8am - 9am

**Califf Medicine Resident
Winning Abstract Presentations**

"Clinical research provides the connection between scientific discoveries and helping our fellow human beings" – *Robert M. Califf, MD*

9am - 10am

Poster Competition

Breakfast will be served during poster session



Department of Medicine

Duke University School of Medicine

2023-2024 ANNUAL CALIFF MEDICINE RESIDENT RESEARCH AWARD ABSTRACT PRESENTATIONS

Care Coordination for Patients Admitted with Alcohol-Associated Liver Disease: An Assessment of Appropriate Follow-up and Treatment at Time of Discharge

Isabelle Byers, MD, PGY-2

Mentor: Stephanie Garbarino, MD

Readiness for Pediatric to Adult Healthcare Transition in Young Adult Hospitalized Patients

Noah Hellerman, MD, PGY-2

Mentor: Ruchi Doshi MD MPH

Neighborhood Socioeconomic Deprivation, Healthcare Access, Characteristics of Treating Healthcare Facilities, and 30-day Mortality and Readmission for Patients Hospitalized with Common Medical Conditions

Jay Lusk, MD, PGY-1

Mentor: Bradley G. Hamill, DrPH

2023-2024 FACULTY RESIDENT RESEARCH GRANT WINNERS

Endoscopic management of enterocutaneous fistulas, a systematic review. & Endoscopic management of enterocutaneous fistulas, a quaternary care center experience.

Peter Albares, MD

Mentor(s): Kara Wegermann, MD and Alyson Johnson, MD

Clinical Significance of Positive T-Cell Clonality Testing

Clare Anderson, MD

Mentor: Jie Wang MD, MS

Anticoagulation Targets in VV ECMO Patients with COVID-19 ARDS

Benjamin Berger, MD

Mentor: Elias Pratt, MD

Repeat catheter ablation for atrial fibrillation: a study of procedural techniques, recurrence mechanisms, safety, and outcomes

Mark Brahier, MD, MBA

Mentor: Jonathan P. Piccini, MD, MHS

Determinants associated with weight gain among persons with HIV who switch to integrase strand transfer inhibitors (INSTI)

Melissa Cutshaw, MD, MPH

Mentor: Nwora Lance Okeke, MD

Development of a Scoring System for the Evaluation & Comparison of Computer-Aided Detection Programs in Colonoscopy Using a Modified Delphi Approach

Sanjay Gadi, MD

Mentor: Jeremy Brown, MD, MSc

Association of sacubitril-valsartan versus valsartan with healthcare utilization following worsening heart failure in patients with EF>40%

Alexander Gunn, MD, MS

Mentor: Robert Mentz, MD

Predictors of Survival in Lung Transplant Patients Who Require Venovenous Extracorporeal Membrane Oxygenation in the Post- Transplant Period

Madeleine Hamilton, MD

Mentor: Craig Rackley, MD

Risk of Healthcare-associated Infections for Patients Supported with VV-ECMO for COVID-19 ARDS vs. ARDS from Other Causes

Jacquelyn Kercheval, MD

Mentor: Craig Rackley, MD

2023-2024 FACULTY RESIDENT RESEARCH GRANT WINNERS

Cardiovascular Disease in People Living with HIV: Disparities in Risk Factor Optimization and Outcomes

Elizabeth Kobe, MD, MHS

Mentor: Nishant Shah, MD

The Role of Artificial Intelligence in Medical Creative Writing: Comparative Analysis of Medical Poems by Physician and GPT-4

Kate Lee, MD, MS

Mentor: Anthony Galanos, MD

Effects of Sacubitril/Valsartan or Valsartan in De novo vs. Chronic HFpEF and HFmrEF: The PARAGLIDE-HF Trial

Evan Murray, MD

Mentor: Robert Mentz, MD

Cardiac MRI Predictors of Atrial Arrhythmia Ablation Outcomes in Repaired Tetralogy of Fallot

Bret Pinsker, MD

Mentor: Richard Krasuski, MD

A Systematic Review with Meta-Analysis: Botulinum Toxin Type A for Prevention of Post-Operative Atrial Fibrillation after Cardiac Surgery

Shelief Robbins-Juarez, MD

Mentor: Jonathan P. Piccini, MD, MHS

Do Adult Patients with Acute Lymphoblastic Leukemia (ALL) who Receive Asparaginase as Part of Their Chemotherapy Regimen Have Improved Five-Year Overall Survival Compared to Adults with ALL Who Do Not Receive asparaginase?

Bari Rosenberg, MD

Mentor: Thomas LeBlanc, MD, MA

Evaluation of Factors Affecting Deployment of Biologic Therapy in the Management of Inpatient Acute Severe Ulcerative Colitis at Duke Regional Hospital

Nivita Sharma, MD

Mentor: Cecelia Zhang, MD

Alcohol relapse after liver transplantation: risk factors, outcomes, and a comparison of risk stratification models

Karen Young, MD

Mentor: Stephanie Garbarino, MD

2023-2024 STEAD RESIDENT RESEARCH GRANT WINNERS

Treatment Outcomes and Clinical Characteristics of Patients with Non KRAS-G12C-Mutant NSCLC

Clare Anderson, MD

Mentor: Chenyu Lin, MD

Association of Sensor-Based Sleep Measurements with Cardiometabolic Disease and Subclinical Atherosclerosis in the Project Baseline Health Study

Krunal Amin, MD

Mentor: Nishant Shah, MD

Decongestion and Outcomes in Acute Heart Failure with Moderate-Severe Mitral or Tricuspid Regurgitation

Sarah Ashley, MD

Mentor: Stephen Green, MD

Pre-Liver Transplantation Cardiovascular (CV) Risk Stratification and Post-LT CV events

Sandra Au, MD

Mentor: Kara Wegermann, MD

Assessing Percutaneous Coronary Intervention Outcomes by Operator Career Status in the United States

Garrett Bethel, MD

Mentor: Jennifer Rymer, MD, MBA

Care Coordination for Patients Admitted with Alcohol-Associated Liver Disease: An Assessment of Appropriate Follow-up and Treatment at Time of Discharge

Isabelle Byers, MD

Mentor: Stephanie Garbarino, MD

Evaluation of etiology, management, and risk factors for mortality among patients with acute upper gastrointestinal bleeding at a tertiary care center in Northern Tanzania

Catherine Cheney, MD, MSc

Mentor: Matthew Rubach, MD

Heart failure among persons with HIV: use of guideline-directed medical therapy

Melissa Cutshaw, MD, MPH

Mentor: Lance Okeke, MD

Construction of a Duke Health-specific AI Chatbot to Answer Common GI Questions & Comparison of Performance to Conventional Large Language Models

Sanjay Gadi, MD

Mentor: Jeremy Glissen Brown, MD, MSc

2023-2024 STEAD RESIDENT RESEARCH GRANT WINNERS

Heart Failure Functional Class and Predictors of Mortality in Patients with Light-chain Cardiac Amyloidosis

Alexander Gunn, MD, MS

Mentor: Michel Kouri, MD

Food Insecurity and Post Liver Transplant Outcomes: A Retrospective Study

Ashley Jowell, MD, MS

Mentor: Andrew Muir, MD, MHS

Epstein-Barr Virus Positivity as a Prognostic Marker for Diffuse Large B Cell Lymphoma in the Modern Era

Kristen McClellan, MD

Mentor: Jie Wang, MD, MS

Review of Screening Adenoma Detection Rate in patients aged 45-49 compared to Patients Aged 50-75 with Implications on Quality Measurement

Rachel Obimah, MD

Mentor: Darin Dufault, MD

Effects of Angiotensin-Neprilysin Inhibition in Black Versus White Patients with Mildly Reduced or Preserved Ejection Fraction and Worsening Heart Failure: Insights from PARAGLIDE-HF

Cayla Pichan, MD

Mentor: Robert Mentz, MD

We Are What We Breathe: Retrospective Analysis of Environmental Exposures and Interstitial Lung Disease Outcomes

Auston Stiefer, MD

Mentor: Aparna Swaminathan, MD, MHS

Rates and Predictors of Cancer Screening Adherence in Patients with Chronic Lymphocytic Leukemia

Julian Weiss, MD

Mentor: Danielle Brander, MD

2024 RESIDENT RESEARCH DAY POSTER SUBMISSIONS

Incident Heart Failure With Preserved Ejection Fraction In A Cohort Of Patients With Biopsy-proven Non-alcoholic Fatty Liver Disease

Carolyn Ahlers, MD

Mentor: Kara Wegermann, MD

Tolerability and Outcomes of Bruton Tyrosine Kinase Inhibitors for Chronic Lymphocytic Leukemia in Patients with Severe Renal Dysfunction

Clare Anderson, MD

Mentor: Cheyu Lin, MD

Clinical Course and Outcomes in Acute Heart Failure with Moderate-Severe Mitral or Tricuspid Regurgitation

Sarah Ashley, MD

Mentor: Stephen Greene, MD

Relative location of secondary immunization determines germinal center quality and memory B cell fate

John Barber, MD

Mentor: Garnett Kelsoe, D.Sc.

Comparison of Anticoagulation Goals in Patients with COVID-19 ARDS Supported with VV-ECMO

Ben Berger, MD

Mentor: Elias H. Pratt, MD

Geographic rounding on a hospital service for adults with chronic childhood-onset disease

Samantha Collins, MD

Mentor: Ruchi Doshi, MD, MPH

Proteomic Profiling Identifies Metabolic and Extracellular Matrix Markers that Predict MACE in Individuals with Type 2 Diabetes: An EXSCEL Substudy

Kristin Corey, MD

Mentor: Svati H. Shah, MD, MHS

Assessing the Role of the Emergency Department in Executing Public Health Initiatives

Elisabeth Fassas, MD

Mentor: Daniel Gingold, MD

Assessing Criteria for the Evaluation & Comparison of AI-Based Computer-Aided Detection Programs in Colonoscopy: a Modified Delphi Approach

Sanjay Gadi, MD

Mentor: Jeremy Glissen Brown, MD, MSc

2024 RESIDENT RESEARCH DAY POSTER SUBMISSIONS

Estimating the Proportion of Heart Failure Admissions Potentially Eligible for Hospital at Home

Hubert Haywood, MD

Mentor: Stephen Greene, MD

Cost-Effectiveness of Intestinal Ultrasound as Point-of-Care Tool versus Standard Care in the Management of Crohn's Disease

Kate Lee, MD

Mentor: Jane E Onken, MD

Real-world clinical outcomes of patients treated with Lu-177-PSMA-617 for metastatic castration-resistant prostate cancer (mCRPC): a single institution experience.

Valeria Maldonado Grijalva, MD

Mentor: Matthew Labriola, MD

Cangrelor Use in Cardiogenic Shock - Findings from the CAMEO Registry

Cayla Pichan, MD

Mentor: Jennifer A Rymer, MD, MBA, MHS

Psychiatry Resident Physicians Experience Personal and Professional Grief, Burnout and Depression: Results from a National Survey

Gregg Robbins-Welty, MD

Mentor: Anthony Galanos, MD

Trends in Female Representation in Gastroenterology

Nivita Sharma, MD

Mentor: Stephanie Garbarino, MD

Cardiac Resynchronization Therapy in Ischemic Versus Non-Ischemic Cardiomyopathy: A Patient-Level Meta-Analysis of Seven Randomized Clinical Trials

Saurabh Sudesh, MD

Mentor: Sana Al-Khatib, MD

Trends and Disparities in Hepatology Televisits at a Large Tertiary Care Center

Matthew Townsend, MD

Mentor: Andrew Muir, MD

Adoption and Outcomes of Mucosal Defect Margin Snare Tip Soft Coagulation Following Piecemeal Endoscopic Mucosal Resection

Dan Weinberg, MD

Mentor: Joshua Spaete, MD

2024 RESIDENT RESEARCH DAY POSTER SUBMISSIONS

Incidence and Characteristics of Respiratory Viral Infections after CAR T-Cell Therapy

Julian Weiss, MD

Mentor: Jonathan Huggins, MD

Alcohol Relapse after Liver Transplantation: Risk Factors, Outcomes, and a Comparison of Risk Stratification Models

Karen Young, MD

Mentor: Stephanie Garbarino, MD

Acknowledgements

We are grateful to the following Department of Medicine faculty for reviewing resident research grants in the 2023-2024 academic year:

- Stef Alexopoulos, MBBS, MHS
- Lana Wahid, MD
- Stephen Greene, MD
- Cara McDermott, PhD
- Brian Andonian, MD, MHSc
- David Edelman, MD, MHS
- Eugene Friedman, MD, PhD
- Marat Fudim, MD, MHS
- Caroline Sloan, MD
- Matt Sparks, MD
- Brian Sullivan, MD, MHS
- Kara Wegermann, MD
- Andrea Sitlinger, MD
- Deepshikha Charan Ashana, MD, MBA, MS

We are grateful to the following senior Department of Medicine faculty for reviewing and scoring the 2024 Califf Research Award abstracts:

- Lisa Criscione-Schreiber, MD, MEd
- Eugene Friedman, MD, PhD
- Karen Goldstein, MD, MSPH
- Kristin Newby, MD, MHS
- John K. Roberts, MD, Med, MS
- Maria Cristina Segovia, MD

The **Robert M. Califf, MD, Medicine Resident Research Award** recognizes and honors Internal Medicine residents for excellence in research.

The **Stead Resident Research Grants and Faculty Resident Research Grants** provide funding for Internal Medicine residents to develop their skills in clinical or laboratory-based research, to carry out research projects, to present their research findings at scientific meetings, and to publish their work.

The Department of Medicine is grateful to the donors who make these awards and grants possible. To learn more or make a gift, visit medicine.duke.edu/giving.