



# DEPARTMENT OF **MEDICINE** DUKE

---

Moving  
Medicine  
Forward:  
A Vision for  
the Future

---

**2024 ANNUAL  
REPORT**

---

# MESSAGE FROM THE CHAIR



---

**Kathleen A. Cooney, MD, MACP**

George Barth Geller  
Distinguished Professor of Medicine  
Chair, Department of Medicine  
Duke University School of Medicine

## DEAR FRIENDS AND COLLEAGUES,

I am delighted to share our 2024 Annual Report, which showcases some of the significant impact of the Duke University Department of Medicine (DOM). As you read through our publication, you will witness the transformative effects of our work, instilling a sense of pride and inspiration as we continue to move medicine forward with a vision for the future.

We feature some of our team members' notable achievements supporting the department's tripartite mission. Our commitment to making data-informed decisions, using our values to guide our work, and fully embracing inclusivity ensures that — everyone from our patients to our team members — feels valued and engaged.

As we continue to build on our outstanding clinical, research, and education programs, there has been a renewed focus on collaboration and innovation.



---

This year, we fostered new seeds of cross-collaboration across the Duke University Health System (DUHS) as Vice Chair for Quality and Innovation Michael Pignone, MD, MPH, completed his first full academic year in the inaugural role. Dr. Pignone's work is instrumental in transitioning the health system's clinical operations from a traditional, visit-based care delivery infrastructure to a premier, top-performing academic learning health system. This shift is already beginning to take shape tangibly, with the overlying principle of equity guiding our vision and core mission across the health system.

By capitalizing on our inherent academic expertise to improve healthcare delivery through organizational learning, innovation, equity, and continual quality improvement (QI), we are taking steps to ensure that we are well-prepared to meet the future challenges that medicine holds for us all.

I hope in reading our 2024 Annual Report, you will see the scope of our work and the depth of our commitment to excellence as we continue to move medicine forward—together. ■

---

# TABLE OF CONTENTS

---

**Message  
from the Chair**

**P2 – 03**

**Awards &  
Recognitions**

**P17 – 20**

**Department of Medicine:  
Leadership**

**P6 – 07**

**School of Medicine:  
Faculty & Staff Awards**

**P21**

**Quality Initiative Improves  
Care for Patients with  
Hepatitis C**

**P15 – 16**

**Distinguished  
Professors**

**P22 – 23**



**Department of Medicine**

Duke University School of Medicine



## INTERDIGITATING QI TO MOVE MEDICINE FORWARD

P8 – 14

### By the Numbers

Clinical P25

Research P26

Education P27 – 28

### Legacy of Listening: Duke Establishes Memorial Bench in Honor of Dr. Kimberley Evans

P29 – 30

### Division Leadership

P30 – 31

### Across the Department

Education P32

Clinical P34

Research P35

People P37

In Memoriam P39

**ANNUAL REPORT 2024**  
JULY 1, 2023 - JUNE 30, 2024

**EDITOR**  
LaWanda McCreary

**EDITORIAL TEAM**  
Elizabeth Switzer  
Sarah Riddle  
Synclaire Cruel  
Karen Judge

**PHOTOGRAPHY**  
Colin Huth  
Duke Health

**GRAPHIC DESIGN**  
Michelle Couch

---

# DEPARTMENT OF MEDICINE LEADERSHIP

---

## CHAIR



**Kathleen A. Cooney, MD**  
Chair

## VICE CHAIRS



**Andrew Alspaugh, MD**  
Academic Affairs



**Andrew Muir, MD**  
Clinical Affairs



**Carla Brady, MD**  
Faculty Development



**Scott Palmer, MD**  
Research



**Lisa Criscione-Schreiber,  
MD, MEd, Education**



**Amy Porter-Tacoronte,  
MBA, Administration and  
Finance**



**Christopher Hostler, MD, MPH, Veterans Affairs**



**Julius Wilder, MD, PhD  
Equity, Diversity, and Inclusion**



**Michael Pignone, MD, MPH, Quality and Innovation**

# DIVISION CHIEFS



**Carey Anders, MD  
Medical Oncology (Interim)**



**William Yancy, MD  
General Internal Medicine (Interim)**



**Stefanie Sarantopoulos, MD, PhD  
Hematologic Malignancies and  
Cellular Therapy**



**Cathleen Colon-Emeric, MD  
Geriatrics**



**David D'Alessio, MD  
Endocrinology, Metabolism,  
and Nutrition**



**Andrew Muir, MD  
Gastroenterology**



**Thomas Ortel, MD, PhD  
Hematology**



**Manesh Patel, MD  
Cardiology**



**John Perfect, MD  
Infectious Diseases**



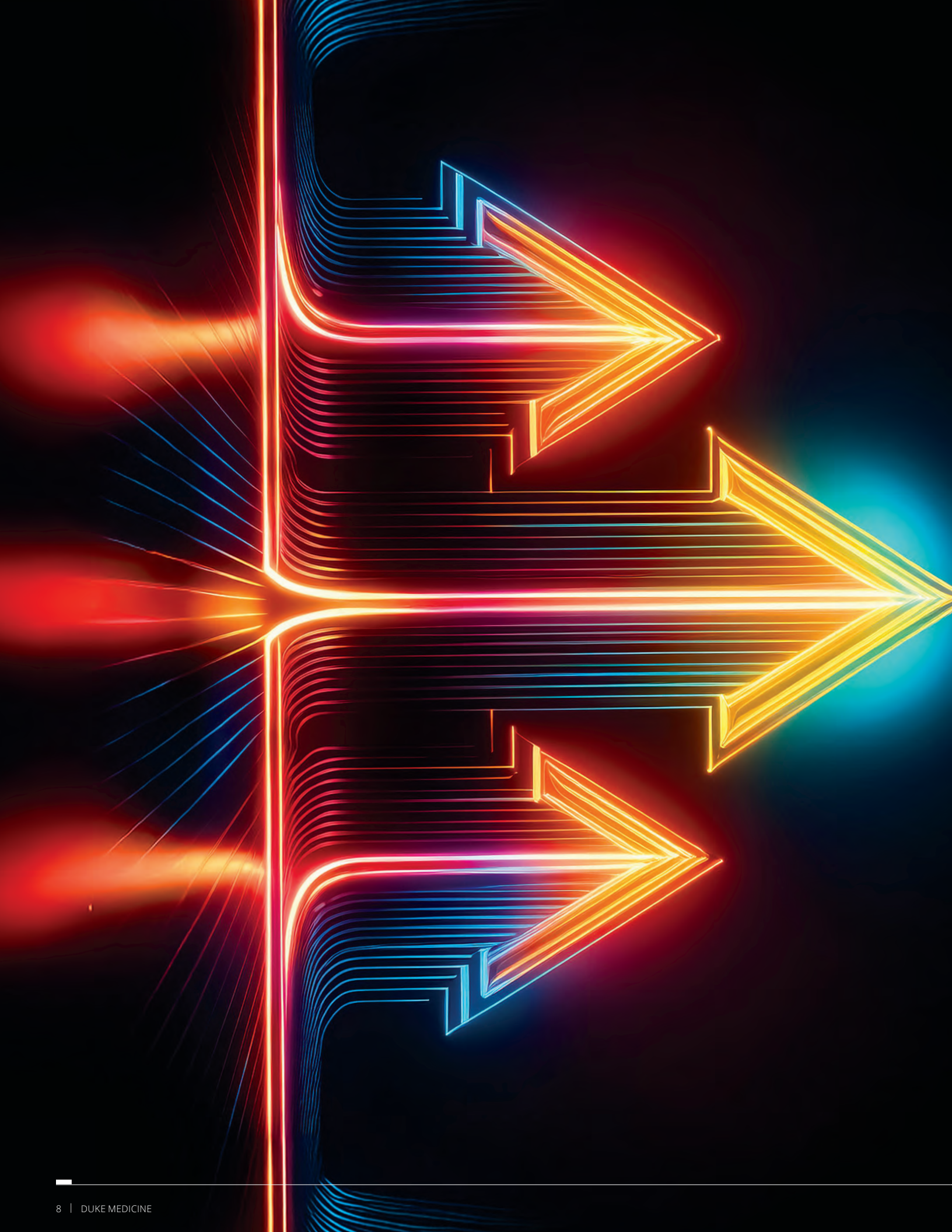
**Loretta Que, MD  
Pulmonary, Allergy, and  
Critical Care Medicine**



**Megan Clowse, MD  
Rheumatology and Immunology**



**Christina Wyatt, MD, MSc  
Nephrology (Interim)**



---

# INTERDIGITATING QI TO MOVE MEDICINE FORWARD

---

The Duke Department of Medicine (DOM) is leading an evolutionary drive to become an academic learning health system (aLHS) that capitalizes on its inherent academic expertise in health system sciences to promote improved health care delivery through organizational learning, innovation, equity, and continual quality improvement (QI).

Through dedication to its tripartite mission of excellence in research, teaching, and patient care, the department is working continuously to improve patient safety, provide the best care possible, lower health care costs, and lead efforts to improve the health of its communities; goals that depend upon well-integrated QI initiatives in order to succeed.

As **Michael Pignone, MD, MPH**, the Rebecca and John Kirkland Distinguished Professor of Medicine, completes his first full academic year in the inaugural role of Vice Chair for Quality and Innovation, interdigitating of the vision and core mission across the health system – with the overlying principle of equity – is beginning to tangibly take shape.

---

## THE COMPLEX GARDEN

Moving the health system's base clinical operations from a traditional, visit-based care delivery model to a premier top-performer requires an integrated system of care behind it. That's where Dr. Pignone — who splits his time linking together new QI initiatives across the department, the School of Medicine (SOM) and the Duke University Health System (DUHS) — comes in.

He likens the role to that of a point guard, a team player “who wants to involve everyone in the game.”

“If we want to be a top-performing health system, we have to build in those secondary layers to achieve the highest level of performance,” he said. “Great achievement — and Duke strives for great achievement — is not possible with everyone working in their own silo, so building out the academic learning health system such that all components work together optimally is critical to the future of medicine. The traditional model of commodified healthcare is like a thresher going down the long lines of wheat — it is very efficient, it's just not ecologically sound. Our metaphor is the complex garden, not the row of crops. The whole is greater than the sum of the parts.”

**Left to right:** Michelle Lyn; Jonathan McCall; Jillian Hauser; Michael Pignone, MD; Shelley Rusincovitch; and Armando Bedoya, MD





---

Pignone's focus moving forward includes better coordination across programs and organizational units, a relentless focus on top outcomes and removing disparities, development of faculty expertise in rapid-cycle improvement methods, and the growth of health services research to interface with QI.

Building on well-established internal entities with ongoing QI projects and adding new projects each year, Pignone is integrating it all with QI training, data analytics, population health, health policy operational quality efforts linked to diversity equity and inclusion, and health services research.

Further building on the DOM's strengths as a top five academic program with a top 10 research portfolio, an outstanding faculty, and the excellent health macro-environment of Durham, the QI program has innovative, meaningful efforts underway to improve the quality and equity of care in key areas such as asthma, screening for unmet social needs, diabetes, and colorectal cancer screening.

## DISCERNING CHOICES

"Part of the curriculum is understanding the problem holistically and then looking at potential solutions. It's literally a curriculum about how to make discerning choices about what kind of intervention to try," said Dr. Pignone. "Projects like the ones we're doing on an annual basis will help our faculty secure more grants in the future."

Health justice researcher, Assistant Professor Dr. Isaretta Riley (Pulmonary, Allergy and Critical Care), is the principal investigator on the National Institutes of Health grant, Asthma Through Life Management (CALM) a study on asthma and health equity disparities and leads one of this year's quality-equity projects focused on operational improvement of asthma care at Duke.

Another QI project has been explicitly focused on cross-divisional collaboration between Assistant Professors Dr. Akshay Pendyal (Cardiology) and Dr. Elizabeth Jane Malcolm (General Internal Medicine), who are working to improve adherence to guideline-recommended medications for better heart failure care in patients who receive care at the Duke Outpatient Clinic teaching clinic.

QI equity initiatives include work by cardiologists Drs. Larry Jackson and Kevin Thomas to examine equity in the use of ablation and use of anticoagulation in patients with atrial fibrillation. Endocrinologist, Dr. Susan Spratt, professor in Medicine and others are improving equity in the use of novel agents in patients with diabetes.

Though Dr. Pignone did not arrive at Duke until the beginning of the 2023-2024 academic year, a couple of QI projects from that time have already borne fruit.

At the suggestion of new gastroenterology Assistant Professor Dr. Jackie Henson, DUHS made a simple but systemic change in July 2024 to simplify



*Michael Pignone, MD, MPH, Rebecca and John Kirkland Distinguished Professor of Medicine*

the process for hepatitis C virus diagnosis by eliminating non-reflex testing as part of the department's 2023-2024 Medicine Quality Initiative for Hepatitis C Elimination. The project contains strong components of equity, education and clinical operations.

Dr. David Halpern, associate professor in General Internal Medicine and director of quality for Duke Primary Care, is working to improve hypertension control in the Black patient population through workflow redesign that uses electronic health record to integrate self-monitoring, education, and reporting.

By incorporating transparency on race and ethnicity into hypertension data, he believes this work — a Duke Collaborative to Advance Health Equity (CACHE) project — can increase visibility for providers and help normalize conversations about equity as a fundamental component of ongoing QI work at Duke.

## **ELIMINATING INEQUITIES**

In October, Dr. Pignone took the helm of the community-driven, multi-disciplined CACHE initiative, whose mission uses data from across the Duke Health system to enable interventions that address the root causes of disparities inside and beyond the health care system. CACHE is a pivotal part of Duke's ongoing efforts to distill insights from its data, its providers, and from the communities it serves, use that information to identify and eliminate inequities in health care, and improve patient outcomes.

Under the CACHE initiative, QI work is also taking place on implicit bias hypertension control, work that has spawned more projects involving investigators from across the DOM and the Duke University School of Medicine — a natural extension of CACHE-based work. Drs. Laura Svetkey and Crystal Tyson have an R34 planning grant for clinical trial of implicit bias mitigation training for clinicians.

---

With natural connections to DOM's educational mission tenet of teaching QI skills to new physicians, the program is a natural component of faculty development.

An effective, viable QI program, said Dr. Pignone — who has mentored over 50 trainees in health services and health equity research, and in operational quality improvement— requires diverse faculty expertise in QI and ensures that education is embedded in care delivery.

## **QI CHAMPIONS**

Toward this end, developing a cadre of physician faculty members to become QI champions from across the department's 13 divisions is a priority. QI champions are charged with growing their skill set, and working to build in an educational component for the fellows in each division.

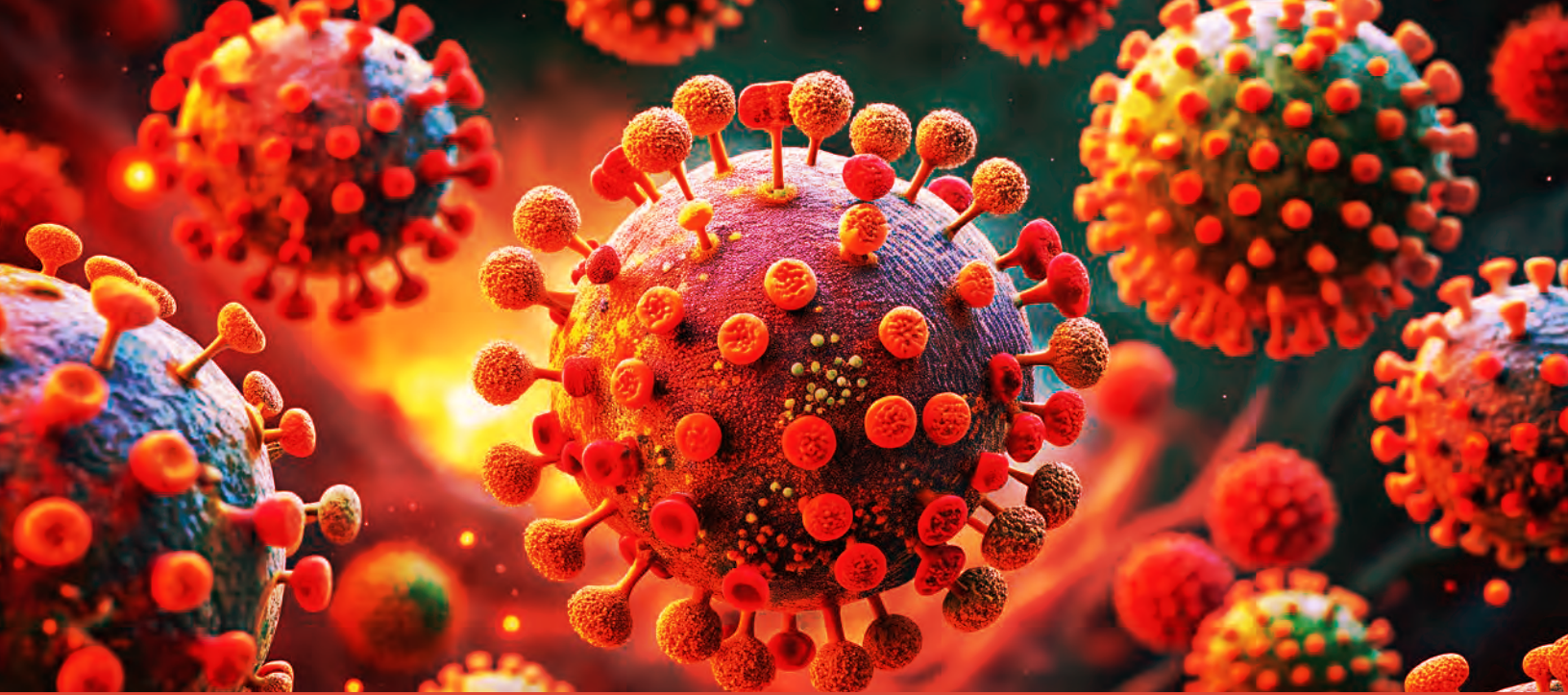
"If we're successful in training practitioners with skills in this area, we hope our practitioners will go on to train others," said Dr. Pignone, who aims to support every division within Medicine to have one or more projects.

Project sequencing has initially been an organic process for divisional cohorts but the plan is to support six or seven QI programs each academic year, looking specifically at those with inherent equity components. DOM vice chiefs for equity, diversity and inclusion have been working this year with their division chiefs to put forth particular focus areas.

Many health problems that are being addressed by the CACHE initiative have major components in the DOM, which allows for better synergy between department-based efforts and health system-based efforts.

Other institutional priorities that have been supported include a health system-based QI on improving transitions of care out of the Duke Medical Center and Duke Regional Hospital in Raleigh, which addresses the health system role on screening for unmet social needs.

"I am looking forward to working with great colleagues here at Duke to expand opportunities for students, residents, fellows and junior faculty to develop skills in these areas and accelerate the performance of health systems locally, state-wide, nationally, and internationally," Dr. Pignone said. ■



## Quality Initiative Improves Care for Patients with Hepatitis C

**Dr. Jackie Henson**, who just began her first year as a Duke gastroenterology faculty member, knows that sometimes it's the little things that matter most.

At her suggestion, Duke University Health System (DUHS) made a simple but systemic change in July to improve the process for hepatitis C virus (HCV) diagnosis by eliminating non-reflex testing as part of the Department of Medicine Quality Initiative for Hepatitis C Elimination for 2023-2024.

In order to evaluate the state of HCV within DUHS and to inform a plan for its elimination, Dr. Henson worked with mentor and Gastroenterology Division Chief **Dr. Andrew Muir**, to identify gaps where care could be improved. They looked at the whole process, characterizing the five-step HCV care cascade.

They found that barriers to care existed at each stage. The first gap was identified as a lack of confirmatory RNA testing following a patient's positive antibody test.

### SMALL CHANGES, BIG IMPACTS

Dr. Henson and Dr. Muir suggested replacing the older two-step process of performing hepatitis C antibody testing alone and then requiring a separate blood draw for RNA testing with hepatitis C



antibody with reflex testing in which if the antibody test comes back positive, the RNA test is run automatically. So, from a patient perspective or a clinician perspective, there is one lab test then that takes care of both and they don't need to come back for a second test.

"It's a small system change that could have a big impact on convenience for patients and clinicians, and reducing barriers to hepatitis C treatment," Dr. Henson said.

"There have been studies that have been done elsewhere that have looked at the cost effectiveness of strategies that basically do reflex testing for all antibody testing and they found that that's more cost effective," she said. "So, in addition to being more convenient, reducing a



barrier, it has been found to be cost effective as well. This presents an opportunity to positively impact the health of these individuals and others with HCV in the future, as well as to prevent downstream complications of hepatitis C that place an increased burden on the health system.”

Dr. Henson noted within the last two years there were nearly 500 patients with positive antibody tests without reflex RNA testing, and these patients were less likely to have subsequent RNA testing, as well as less likely to ultimately be linked to care for their hepatitis C and treated.

### **HCV RATES RISING NATIONALLY**

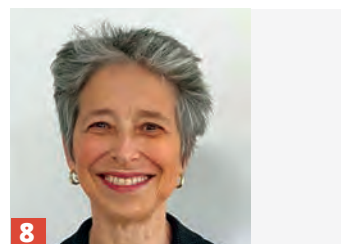
Despite the availability of effective, well-tolerated medication regimens for hepatitis C virus (HCV), an estimated 1 to 3 million individuals in the United States remain infected, with an estimated 50,000 new infections every year. Left untreated, the virus causes a chronic infection that left untreated can progress to cirrhosis, liver cancer, and death.

The incidence rate of acute HCV has, in fact, more than doubled since 2013 and increased 15% from 2019, a trend that has been observed nationally and locally, Dr. Henson said.

In addition to changing the hepatitis C antibody test ordering, outreach to primary care providers was initiated for Duke primary care patients with untreated hepatitis C (based on a positive RNA test) within the last two years. Patient outreach via MyChart was also implemented for the subset of patients with MyChart access, and other strategies to reach these patients are being explored.

A number of additional strategies to improve efficiency and reduce barriers in the HCV treatment process were also made such as attempting to minimize the number of appointments required; promoting the use of telehealth to reduce travel and time barriers; implemented e-consult-based guidance for HCV treatment. Targeted interventions are in process for subgroups. ■

# AWARDS & RECOGNITIONS



## KIMBERLEY J. EVANS LEGACY AWARD

**1** **Laura Svetkey, MD, MHS**  
Professor of Medicine  
Division of Nephrology

## 2024 EDUCATION ACHIEVEMENT AWARD

**2** **Lisa Criscione-Schreiber, MD, MEd**  
Professor of Medicine  
Division of Rheumatology  
and Immunology

**3** **Aimee Zaas, MD, MHS**  
Professor of Medicine  
Division of Infectious Diseases

**4** **Mitchell Heflin, MD, MHS**  
Professor of Medicine  
Division of Geriatrics

## CAREER ACHIEVEMENT

**5** **James Abbruzzese, MD**  
Professor of Medicine  
Division of Medical Oncology

**6** **Neil MacIntyre, MD**  
Professor of Medicine  
Division of Pulmonary, Allergy,  
and Critical Care Medicine

**7** **Diana McNeill, MD**  
Professor of Medicine  
Division of Endocrinology,  
Metabolism, and Nutrition

**8** **Pamela Douglas, MD**  
Professor of Medicine  
Division of Cardiology

## CHAIR'S AWARDS

**9 Andrew Muir, MD, MHS**  
Professor of Medicine  
Division of Gastroenterology

**10 Emelia Dunston**  
Administrative Coordinator  
Chair's Office

**11 Carey Anders, MD**  
Professor of Medicine  
Division of Medical Oncology



## NEIL SPECTOR AWARD

**12 Christopher Cox, MD**  
Professor of Medicine  
Division of Pulmonary, Allergy,  
and Critical Care Medicine



## EXCELLENCE IN EDUCATION

**13 Christopher L. Holley, MD, PhD**  
Associate Professor of Medicine  
Division of Cardiology

**14 Tracy Setji, MD, MHS**  
Associate Professor of Medicine  
Division of Endocrinology,  
Metabolism, and Diabetes

**15 Martin Poleski, MD**  
Professor of Medicine  
Division of Gastroenterology

**16 Yoon Hie Kim, MD, MPH**  
Assistant Professor of Medicine  
Division of Geriatrics

**17 Denise Pong, MD, MPH**  
Assistant Professor of Medicine  
Division of General Internal Medicine

**18 John J. Strouse, MD, PhD**  
Associate Professor of Medicine  
Division of Hematology

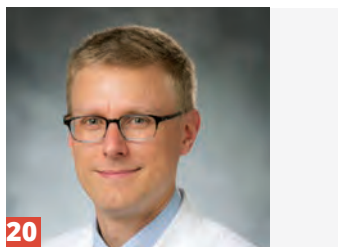




19



24



20



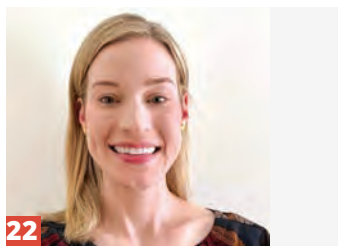
25



21



26



22



27



23

**19 Richard Riedel, MD**

Associate Professor of Medicine  
Division of Hematologic Malignancies  
and Cellular Therapy

**20 James Howard, MD, MPH**

Assistant Professor of Medicine  
Division of General Internal Medicine

**21 Ted (Edward) Hendershot, MD**

Associate Professor of Medicine  
Division of Infectious Diseases

**22 Rebecca Frazier, MD**

Assistant Professor of Medicine  
Division of Medical Oncology

**23 Wissam Mansour, MD**

Assistant Professor of Medicine  
Division of Pulmonary, Allergy, and  
Critical Care Medicine

**24 Mithu Maheswaranathan, MD**

Assistant Professor of Medicine  
Division of Rheumatology and  
Immunology

**25 Alexandra Stefanovic, MD**

Associate Professor of Medicine  
Hematologic Malignancies and  
Cellular Therapy

**ADMINISTRATIVE AWARDS**

*Distinguished Achievement  
in Administrative Service Award*

**26 Nick Nguyen, MHA**

Division Administrator

*Rising Star for Administrative  
Excellence Award*

**27 Brianna Small, MSW, MPA**

Program Coordinator

*Team Award for  
Administrative Excellence*

- 28** **APT Team** (Left to Right)  
 – **Joan Dupont, PhD**  
 – **Amy Bradley**  
 – **Sheila Walls**  
 – **Jonathan Gilbert**  
 (not Pictured)



*Lifetime Achievement  
Award in Administration*

- 29** **Sandra Pendergraph**  
 Senior Business Manager



**TRAINEE AWARDS**

*VA Faculty Teaching Award*

- 30** **Alex Horne, MD**  
 Assistant Professor of Medicine  
 Division of General Internal  
 Medicine



*Eugene Stead Teaching Award*

- 31** **Vinay Choksi, MD,**  
 Assistant Professor of Medicine  
 Division of General Internal  
 Medicine



- 32** **Sonya Patel-Nguyen, MD**  
 Assistant Professor of Medicine  
 Division of General Internal  
 Medicine

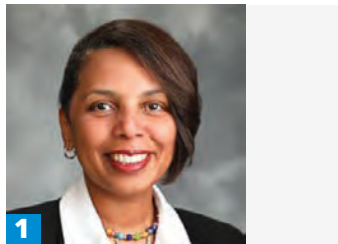
*2024 Haskel Schiff Award*

- 33** **Jacquelyn Kercheval, MD**  
 Senior Assistant Resident

*2024 Bruce Dixon Award*

- 34** **Shelief Robbins-Juarez, MD**  
 Senior Assistant Resident  
 Division of General Internal  
 Medicine

# FACULTY & STAFF AWARDS



1



5



2



6



3



7



4



8

## DEAN'S STAFF AWARD

*Professionalism and Integrity Staff Award*

**1 Pamela Keels, MBA**  
Administrative Director,  
Department of Medicine

## FACULTY AWARD

*Excellence in Professionalism Award*

**2 Andrew Alspaugh, MD**  
Professor of Medicine,  
Division of Infectious Diseases

**3 Adrian Hernandez, MD**  
Professor of Medicine,  
Division of Cardiology  
Vice Dean and Executive Director  
of Duke Clinical Research

*Leonard Palumbo Jr., MD Faculty Achievement Award*

**4 Aimee Zaas, MD, MHS,**  
Professor of Medicine, Division  
of Infectious Diseases

*Master Clinician/Teacher Awards*

**5 Anita Kelsey, MD, MBA,**  
Professor of Medicine,  
Division of Cardiology

*Early Career Mentoring Award  
in Basic and Translational Science*

**6 Christopher Holley, MD, PhD**  
Associate Professor of Medicine,  
Division of Cardiology

*Early Career Mentoring Award  
in Clinical Research*

**7 Neha Pagidipati, MD, MPH**  
Associate Professor of Medicine,  
Division of Cardiology

*Ruth and A. Morris Williams  
Faculty Research Prize*

**8 Opeyemi Olabisi, MD, PhD**  
Associate Professor of Medicine,  
Division of Nephrology

# DISTINGUISHED PROFESSORS

## **GARY HOCK** **DISTINGUISHED PROFESSOR IN GLOBAL HEALTH**

**1** **Chris Beyrer, MD, MPH**  
Professor of Medicine, Division of Infectious Diseases  
Director, Duke Global Health Institute

## **BRENDA E. ARMSTRONG, M.D.** **DISTINGUISHED PROFESSOR**

**2** **Kimberly S. Johnson, MD**  
Professor of Medicine, Division of Geriatrics

## **HALLER** **DISTINGUISHED PROFESSOR IN NEPHROLOGY**

**3** **Xunrong Luo, MD, PhD**  
Professor of Medicine, Division of Nephrology  
Director of Translational Research,  
Duke Transplant Center

## **REBECCA & JOHN KIRKLAND** **DISTINGUISHED PROFESSOR OF MEDICINE**

**4** **Michael Pignone, MD, MPH**  
Professor of Medicine  
Vice Chair, Quality and Innovation,  
Department of Medicine

## **DONALD F. FORTIN, M.D.** **DISTINGUISHED PROFESSOR OF CARDIOLOGY**

**5** **Kevin Thomas, MD**  
Professor of Medicine, Division of Cardiology  
Vice Dean, Equity, Diversity, and Inclusion,  
School of Medicine

## **DUKE SCHOOL OF MEDICINE** **DISTINGUISHED PROFESSOR IN NEUROSCIENCE**

**6** **Heather Whitson, MD, MHS**  
Professor of Medicine, Division of Geriatrics  
Director, Duke Center for the Study of Aging  
and Human Development





## BY THE NUMBERS: RESEARCH

---

448

AVERAGE NEW  
GRANTS ANNUALLY

\$205.2M

AVERAGE  
FEDERAL  
AWARD

152

FEDERAL GRANTS

51 FEDERAL NIH GRANTS

101 FEDERAL NON-NIH

296

NON-FEDERAL  
GRANTS



1,322

ACTIVE RESEARCH  
PROJECTS

267 FACULTY WITH A TOTAL OF 344 PUBLICATIONS

# BY THE NUMBERS: CLINICAL

	FY24	FY23	% Growth
RVUs	2,024,221	1,849,215	9.5%
Outpatient Visits	383,079	348,287	10.0%
Procedures	732,654	650,293	12.7%
Unique Patients Seen	221,766	207,656	6.8%



## 12 FACULTY MEMBERS INDUCTED INTO DOM CLINICAL EXCELLENCE SOCIETY

The Duke Department of Medicine has selected 12 faculty members for the inaugural class of the Clinician Excellence Society. It is an expansion of the Master Clinician Awards and recognizes faculty members across the department who have made significant contributions to patient care, clinical innovation, and training the next generation of physicians.

“The Clinical Excellence Society provides an opportunity to establish a group of dedicated clinicians who truly excel in clinical practice,” said Dr. Kathleen Cooney, chair of the department. “These physicians we rely on for advice on the most challenging cases and who we ask to take care of our family members.”

For the inaugural induction, the inductees broadly represent the many divisions and specialties across the department. The inductees are widely regarded as “the doctor’s doctor” and were nominated by either a peer or leader within their division.

*Left to right:*  
David Butterly, MD  
Malcolm Branch, MD  
Adam DeVore, MD,MHS  
Joseph Govert, MD  
Edward Hendershot, MD  
Noel Ivey, MD  
Delani Mann-Johnson, MD  
Gwynn Long, MD  
Hope Uronis, MD  
Heidi White, MD  
Nicole Jelesoff, MD  
Eugene St. Clair, MD

# BY THE NUMBERS: EDUCATION

## Trainee Subspecialties

**3** TRAINEES IN  
HEART FAILURE 

**15** TRAINEES IN  
GASTROENTEROLOGY 

**4** TRAINEES IN  
PALLIATIVE  
CARE

**3** TRAINEES IN  
INTERVENTIONAL  
CARDIOLOGY

**21** TRAINEES IN  
HEMATOLOGY ONCOLOGY 

**30** TRAINEES IN  
CARDIOLOGY 


**1** TRAINEE IN  
INTERVENTIONAL  
PULMONOLOGY

**18** TRAINEES IN  
PULMONARY &  
CRITICAL CARE



**3** TRAINEES IN  
CRITICAL CARE  
MEDICINE

**10** TRAINEES IN  
NEPHROLOGY 

**4** TRAINEES IN  
ELECTROPHYSIOLOGY 

---

**5** TRAINEES IN  
RHEUMATOLOGY



---

**5** TRAINEES IN  
GERIATRICS



---

**1** TRAINEE IN  
TRANSPLANT  
HEPATOLOGY



---

**1** TRAINEE IN  
ADULT CONGENITAL



---

**8** TRAINEES IN  
INFECTIOUS DISEASES



---

**8** TRAINEES IN  
ENDOCRINOLOGY



## Our Trainees



**181**  
FEMALE  
**52.16%**



**166**  
MALE  
**47.84%**

---

# LEGACY OF LISTENING: DUKE ESTABLISHES MEMORIAL BENCH IN HONOR OF DR. KIMBERLEY EVANS

---



The Duke Department of Medicine (DOM) is honoring the remarkable legacy of **Dr. Kimberley J. Evans** by dedicating Duke bench that bears her name, featuring a plaque to memorialize her deep impact on colleagues and trainees. Known for her compassion, leadership and dedication to fostering a more inclusive academic community, Dr. Evans leaves behind a legacy that will continue to inspire future generations of physicians.

Dr. Kimberley J. Evans, a professor in the Division of Nephrology, tragically passed away in August 2023. Her association with Duke began in 1998 when she joined as an intern, and over the course of her career, she became an integral figure in both clinical care and leadership. Pioneered initiatives career development for trainees and faculty alike.



### **A LASTING TRIBUTE: THE MEMORIAL BENCH**

This bench is much more than a physical structure, it is a tribute to Dr. Evans' extraordinary legacy as a compassionate listener. Throughout her career, Dr. Evans became known for always being available to offer a listening ear to both her colleagues and trainees. Whether it was addressing professional challenges or providing personal support, she embodied the values of empathy, openness, and understanding.

The memorial bench will symbolize this critical aspect of her work: a space for reflection, conversation, and community-building—qualities Dr. Evans championed within the department. It will serve as a tangible reminder of her impact and provide a quiet place for future trainees and faculty to pause, reflect, and connect, just as she did throughout her career.

"Dr. Kimberley Evans leaves behind an extraordinary legacy at Duke," said **Dr. David Ortiz-Melo**. "The impact of her work at Duke is felt in many different arenas, including patient care, and optimization of our electronic medical record."

He added, "But perhaps the most important impact she had in our lives was her amazing ability to carry on conversations and uplift our spirit. I strongly believe that this 'conversation bench' represents the perfect way to honor her legacy of mentorship, friendship, kindness, selflessness, and compassion." ■



---

# DEPARTMENT OF MEDICINE DIVISION LEADERSHIP

---

## CARDIOLOGY

**Manesh Patel, MD**  
Division Chief

**Camille Frazier-Mills,  
MD, MHS**  
Vice Chief, Clinical  
Services

**Anita Kelsey, MD,  
MBA**  
Vice Chief, Faculty  
Affairs

**Anna Lisa Chamis, MD**  
Vice Chief, Education

**Svati Shah, MD, MHS**  
Vice Chief, Research

**Chet Patel, MD**  
Vice Chief, Community  
Services & Integration

**Camille Frazier-Mills,  
MD, MHS**  
Vice Chief, Equity,  
Diversity, and Inclusion

**Howard Rockman, MD**  
Director, Cardiovascular  
Research Center (CVRC)

**Raj Swaminathan, MD**  
Chief, Veterans Affairs

**Nick Nguyen, MHA**  
Administrative Director

## ENDOCRINOLOGY, METABOLISM, AND NUTRITION

**David D'Alessio, MD**  
Division Chief

**Michael Canos, MD**  
Vice Chief, Clinical  
Affairs

**Bryan C. Batch, MD**  
Vice Chief, Equity,  
Diversity, and Inclusion

**Denise LaBonte**  
Division Administrator

**JoAnne Estwanick, MA**  
Administrative Director

## GASTROENTEROL- OGY

**Andrew J. Muir, MD**  
Division Chief

**Melissa Teitelman-  
Grotegut, MD, MS**  
Vice Chief, Clinical

**Jane E. Onken, MD,  
MHS**  
Vice Chief, Education

**Katherine S. Garman,  
MD**  
Vice Chief, Research

**Julius M. Wilder,  
MD, PhD**  
Vice Chief, Equity,  
Diversity, and Inclusion

**Jennie Slate, MBA**  
Division Administrator

## GENERAL INTER- NAL MEDICINE

**Susan Nicki Hastings,  
MD, MHS**  
Division Chief

**John Paat, MD**  
Vice Chief, Clinical  
Affairs

**David Edelman, MD**  
Vice Chief, Faculty  
Affairs Development

**Daniella Zipkin, MD**  
Vice Chief, Education

**Ranee Chatterjee  
Montgomery, MD**  
Vice Chief, Research

**Fatima Syed, MD**  
Vice Chief, Equity,  
Diversity, and Inclusion

**David Cox, MHA, EMT**  
Division Administrator

## GERIATRICS AND PALLIATIVE CARE

**Cathleen Colón-  
Emeric, MD, MHS,  
FACP, AGSF**  
Division Chief

**Heidi K. White, MD**  
Vice Chief, Clinical  
Affairs

**Mitchell T. Heflin, MD,  
MHS**  
Vice Chief, Education

**Susan Nicole  
Hastings, MD**  
Vice Chief, Research

**Yoon Hie Kim, MD**  
Vice Chief, Equity,  
Diversity, and Inclusion  
Geriatrics

**David Casarett, MD, MA**  
Chief, Palliative Care  
Section

**Karen Jooste, MD**  
Vice Chief, Diversity,  
Equity, and Inclusion  
Palliative Care

## **HEMATOLOGIC MALIGNANCIES AND CELLULAR THERAPY**

**Stefanie Sarantopoulos,  
MD, PhD**  
Division Chief

**Andrea Sitlinger, MD**  
Vice Chief, Clinical Affairs  
Clinical Section Chief,  
Hematologic  
Malignancies

**Mitchell Horwitz, MD**  
Clinical Section Chief,  
ABMT & Cellular Therapy

**Sanghee Hong, MD**  
Vice Chief, Equity,  
Diversity, and Inclusion

**Pamela Keels, MBA**  
Administrative Director

## **HEMATOLOGY**

**Thomas L. Ortel,  
MD, PhD**  
Division Chief and  
Interim Vice Chief,  
Clinical Affairs

**Gowthami Arepally, MD**  
Vice Chief, Research

**John Strouse, MD, PhD**  
Vice Chief, Equity,  
Diversity, and Inclusion

**JoAnne Estwanick, MA**  
Administrative Director

## **HOSPITAL MEDICINE (New division as of September 2024)**

**Noppon Setji, MD**  
Interim Division Chief

**Sathavaram Reddy, MD**  
Vice Chief, Veterans  
Affairs

**Sonya Patel-Nguyen,  
MD**  
Vice Chief, Equity,  
Diversity, and Inclusion

**Eli Chuang, MD**  
Medical Director, Duke  
Raleigh Hospital

**Tara Spector, MD**  
Interim Medical Director,  
Duke University Hospital

**Lalit Verma, MD**  
Medical Director, Duke  
Regional Hospital

**Ryan Stephenson, MBA**  
Division Administrator

## **INFECTIOUS DISEASES**

**Andrew Alspaugh, MD**  
Division Chief

**Kristen Dicks, MD**  
Vice Chief & Director,  
Clinical Operations

**Barbara D. Alexander,  
MD, MHS, FIDSA**  
Vice Chief, Transplant  
Infectious Diseases

**N. Lance Okeke, MD,  
MPH**  
Vice Chief, Equity,  
Diversity, and Inclusion

**Christy Dixon**  
Division Administrator

## **MEDICAL ONCOLOGY**

**Carey Anders, MD**  
Interim Division Chief

**Hope Uronis, MD**  
Vice Chief, Clinical Affairs

**Gerard Blobe, MD**  
Vice Chief, Basic &  
Translational Research

**Thomas Stinchcombe,  
MD**  
Vice Chief, Clinical  
Research

**April Salama, MD**  
Vice Chief, Equity,  
Diversity, and Inclusion

**Pamela Keels, MBA**  
Administrative Director

**Mieko Dunn, MHA**  
Administrative Manager

## **NEPHROLOGY**

**Christina Wyatt, MD**  
Interim Division Chief

**Ruediger W. Lehrich, MD**  
Vice Chief, Clinical Affairs

**Opeyemi Olabisi, MD,  
PhD**  
Vice Chief, Research

**Gentzon Hall, MD**  
Vice Chief, Equity,  
Diversity, and Inclusion

**Marissa Carvalho, PT,  
DPT, MSQM**  
Division Administrator

## **PULMONARY, ALLERGY, AND CRITICAL CARE MEDICINE**

**Loretta Que, MD**  
Division Chief

**Joseph Govert, MD**  
Vice Chief, Inpatient  
Clinical Operations

**Harvey Marshall, MD**  
Vice Chief, Outpatient  
Clinical Operations

**Stephen Bergin, MD**  
Vice Chief, Education

**Robert Tighe, MD**  
Vice Chief, Research

**Isaretta Riley, MD**  
Vice Chief, Equity,  
Diversity, and Inclusion

**Karen Welty-Wolf, MD**  
Vice Chief, VA Pulmonary

**Patricia Lugar, MD**  
Chief, Section of Allergy  
and Immunology

**Julia Peterson, MHSA**  
Division Administrator

## **RHEUMATOLOGY AND IMMUNOLOGY**

**Megan Clowse, MD, MPH**  
Division Chief

**Jayanth Doss, MD, MPH**  
Vice Chief, Clinical Affairs

**David Leverenz, MD**  
Vice Chief, Education

**Teresa Tarrant, MD**  
Vice Chief, Research

**Lisa Carnago, PhD  
Candidate, FNP-C,  
MSN, BSN, RN**  
Vice Chief, Advanced  
Practice Providers

**Sophia Weinmann, MD**  
Vice Chief, Equity,  
Diversity, and Inclusion

**JoAnne Estwanick, MA**  
Administrative Director

**Jasmine Oesch**  
Division Administrator

---

# ACROSS THE DEPARTMENT

---



## Education

---

**Drs. Matt Labriola** and **Stephanie Garbarino** were named Internal Medicine Residency recruitment directors. (Medical Oncology and Gastroenterology)

**Dr. Hannah McManus** won the 2024 Fellow Education Award. (Medical Oncology)

**Dr. Kamran Mahmood** was recognized as a 2024 Distinguished CHEST Educator by the American College of Chest Physicians. (Pulmonary)

**Dr. Tony Huang** and partners in the Duke School of Nursing were invited to visit the Koo Foundation Sun Yat-Sen

Cancer Center. In collaboration with local faculty, they developed and conducted a full-day Airway Workshop for medical students, nurses, nurse practitioners, and respiratory therapists. (Pulmonary)

**Dr. Chris Mosher** was invited to join the Pulmonary Show on Doctor Radio on SiriusXM to discuss how pulmonary rehabilitation could save Medicare money in patients living with COPD. (Pulmonary)

**Drs. Craig Rackley** and **Nina Chen** were invited to speak at the North Carolina Society of Respiratory Care conference

to an audience of 100 respiratory therapists. (Pulmonary)

**Dr. Matthew Kappus** received the Paul G. Killenberg Teaching Award. (Gastroenterology)

**Dr. David Leiman** was honored with the Dawn Provenzale Mentorship Award. (Gastroenterology)

**Dr. Alex Reddy** was awarded the Best Grand Rounds by a Fellow for his lecture, What's Up with Hiccups. (Gastroenterology)

**Dr. Jenny Van Kirk** was the



winner of a Golden Apple Teaching Award. (Hospital Medicine)

**Dr. John Roberts**

appointed new director of Undergraduate Medical Education (Nephrology)

**Drs. Isabelle Byers, Noah Hellermann, and Jay Lusk** were the 2024 Califf Resident Research Award winners. (Internal Medicine Residency Program)

The **DOC-Durham Tech Mobile Lab** was awarded the Duke AHEAD 2024 Inter-professional Educa-

tion (IPE) Team Excellence Award, recognizing the exceptional achievements in the coordination of learners, faculty, or staff as a team within the realm of educational activities. (General Internal Medicine)

The **Critical Care Medicine Program** achieved full accreditation from the Accreditation Council for Graduate Medical Education. (Pulmonary)

**Dr. Nicole Helmke** selected as director of residency training in Medicine-

Psychiatry. (Internal Medicine Residency Program)

**Drs. Lance Okeke and Aimee Zaas** were awarded \$40,000 in funding from the Building Trust through Diversity, Health Care Equity, and Inclusion in Internal Medicine Training grant program to expand the Evidence2Practice program. (Infectious Diseases)

**Dr. Andrea Sitlinger** named new curriculum director in Hematology-Oncology Fellowship

# Clinical

**Enfortumab vedotin plus pembrolizumab** was FDA approved for the first-line treatment of patients with metastatic urothelial carcinoma, doubling overall survival vs chemotherapy for the first time in 30 years and developed in part by research led by Dr. Christopher Hoimes and Duke Cancer Institute Center for Prostate and Urologic Cancers (DPUC) researchers. (Medical Oncology)

**Duke and DPUC became a Radiotheranostics Center of Excellence**, particularly in prostate cancer, based on the development and clinical availability of radioligand therapies to treat men with advanced prostate cancer, such as Pluvicto. (Medical Oncology & Nuclear Medicine)

**Dr. Eziafa Oduah's** research showed that proteasome inhibition could be a therapeutic strategy for TP53 mutated non-small cell lung cancer. (Medical Oncology)

The **Duke Lung Transplant Team** helped a 26-year-old receive a third double-lung transplant. (Pulmonary)

**GI Day Hospital** opened, offering paracentesis and urgent evaluations to patients with complications

of chronic liver disease to improve patient care, reduce emergency department visits and avoid hospital admissions. (Gastroenterology)

The **Geriatrics Division and Population Health Management Office** launched a new longitudinal dementia care management program. (Geriatrics and Palliative Care)

**Duke Regional Hospital** applied for designation as one of the Institute for Healthcare Improvement's Age-Friendly Health Systems, with the leadership of Dr. Serena Wong. (Geriatrics and Palliative Care)

The **Duke Lupus Clinic** received the Aurinia Community Impact Grant Award to address social determinants of health-related needs of patients with lupus nephritis. (Rheumatology)

July marked the **fifth anniversary of Project Caring for Patients** with Opioid Misuse through Evidence-Based Treatment (COMET), a hospitalist-led initiative to improve care for patients with opioid use disorder. (Hospital Medicine)

**Dr. Mark Chandler** is named unit medical director for 3200/2200. (Hospital Medicine)

**Patrick Cacchio, MHS, PA-C, and colleagues** launched the Duke Orthopedic Value and Equity (DOVE) clinic to improve care for patients after sustaining fractures. (Endocrinology)



# Research

---

Research led in part by **Dr. Andrew Armstrong** identified digital pathology AI signatures in prostate cancer to be predictive of the benefits of hormonal therapy in prostate cancer, leading to their incorporation and recommendation in current NCCN guidelines and recently recognized as a 2024 TIME innovation of the year. (Medical Oncology)

**Dr. Grilley Olson** presented at the 2024 ASCO, where she served as study chair for Alliance. Her trial is helping to define the optimal treatment for patients with this rare and aggressive cancer. (Medical Oncology)

**Dr. Eziafa Oduah** was awarded the Robert A. Winn Diversity in Clinical Trials Career Development Award and the Lung Cancer Initiative Career Award. (Medical Oncology)

**Dr. Neal Ready** initiated a large phase 2 investigator-initiated trial TOP2310 with Drs. Antonia, Oduah, and Salfity studying neoadjuvant PCSK9 inhibition with chemo-immunotherapy in resectable non-small cell lung cancer. (Medical Oncology)

**Drs. Sweta Patel and Neelima Navuluri** both received the Dr. G. Ralph Corey Legacy Award. (Pulmonary)

**Dr. Maria Marquine** launched the Duke/UNC Advancing Diversity in Aging Research (ADAR) program to provide research experiences for undergraduate students from groups underrepresented in research careers. (Geriatrics and Palliative Care)

The Malcolm Tyor Award, an endowment established to support junior faculty research in the Division of Gastroenterology, was awarded to **Dr. Jeremy Glissen Brown**. (Gastroenterology)

**Dr. Juliessa Pavon** received an R01 award, Deprescribing Decision-Making using Machine Learning Individualized Treatment Rules to Improve CNS Polypharmacy. (Geriatrics and Palliative Care)

**Dr. Kimberly Johnson** won an NIH grant, focused on reducing institutional racism in primary care (EQUIP). (Geriatrics and Palliative Care)

A study published in JAMA Oncology by **Dr. Frank Wharam** and **colleagues** confirmed that shifts to high-deductible health plans are associated with reduced visits to non-oncologists among cancer patients with out-of-pocket medical expenses increased substantially. (General Internal Medicine)

**Dr. Rasheeda Hall** received a grant to support work with the Kidney Disease Aging Research Collaborative (KDARC) Research Infrastructure to Advance the Science of Geriatric Nephrology. (Nephrology)

**Dr. Samira Musah** received a New Innovator Award from the NIH High-Risk, High-Reward Research Program. (Nephrology)

**Dr. Sarah Nystrom** received a K08 award from the National Institutes of Health for her work on the project, Identification of Host-Specific Determinants of APOL1-associated COVAN. (Nephrology)



**Dr. Kai Sun** received an R01 from the National Institute on Minority Health and Health Disparities to conduct a multi-site study focused on improvements in provider-patient communication about medication use for lupus. (Rheumatology)

**Dr. Virginia Byers Kraus'** research biomarkers for osteoporosis resulted in two newly-patented tests that detect and predict the onset of osteoarthritis. (Rheumatology)

**Drs. Brian Andonian and Kim Huffman** published significant findings for a novel remotely supervised weight loss and exercise training intervention for older adults with rheumatoid arthritis and obesity. (Rheumatology)

**Dr. Stephen Balevic and colleagues** at the DCRI published a manuscript on the impact of an immunomodulatory drug on severe COVID-19. (Rheumatology)

**Drs. Bill St. Clair and Teresa Tarrant** published significant phase 2 findings for a first-in-kind disease-modifying drug, dazodalibep, for Sjogren's disease. (Rheumatology)

**Dr. Sweta Patel** was invited to give a talk on her research on the microbiome and HIV at the Duke CFAR symposium. (Pulmonary)

**Drs. Sara Nystrom and Aaron Vose** received the 2024 Physician-Scientist "Strong Start" awards. (Nephrology and Pulmonary)

**Dr. Senthil Selvaraj** received the American Society for Clinical Investigation 2024 Young Physician-Scientist Award. (Cardiology)

**Dr. Nwora Lance Okeke** received the HIV Medicine Association 2023 Innovator Award. (Infectious Diseases)

# People

---

**Dr. Cameron Oswalt** was appointed as a member of the NRG Oncology Lung Cancer General Committee and the NRG Oncology Patient-Centered Outcomes Research Committee. (Medical Oncology)

**Nancy Terry** celebrated 50 years of service to Duke as a senior program coordinator. (Pulmonary)

**Dr. Armando Bedoya** was selected for The Academy Amazon Web Services (AWS) Technology Fellows Program. (Pulmonary)

**Dr. Stephen Bergin** was accepted to the 2024 Duke Clinical Leadership Program. (Pulmonary)

**Dr. Danny Guidot** won the Robert Harrington award for Excellence in Fellowship award at the DCRI Fellows Farewell Program. (Pulmonary)

**Dr. Sangeeta Joshi** received a scholarship from the Dean's Office for Faculty Development to participate

in the AAMC Transforming Conflict into Collaboration workshop. (Pulmonary)

**Dr. Sweta Patel** received the Duke Microbiome Center Diversity Matters Award, which recognizes her commitment to advancing diversity, equity, and inclusion, both within the local Duke community and globally. (Pulmonary)

**Drs. Loretta Que** and **Cathleen Colon-Emeric** were selected as members of the 2024-2025 class of fellows for the Hedwig van Ameringen Executive Leadership in Academic Medicine Program at Drexel University College of Medicine. (Pulmonary and Geriatrics and Palliative Care)

**Dr. Robert M. Tighe** was appointed to lead the development of the School of Medicine's research strategy on the impact of climate change on health. He will be responsible for developing a coherent research strategy on the impact of climate change on health. (Pulmonary)

**Dr. Stanley Branch** was awarded the American Society of Gastrointestinal Endoscopy Master Endoscopist Award. (Gastroenterology)

**Drs. Lindsay King** and **Cristina Segovia** were inducted as fellows in the American Society of Transplantation. (Gastroenterology)

**Dr. Nicki Hastings** was the inaugural recipient of the Veterans Health Administration (VHA) National Diffusion Award in recognition of accomplishments in spreading effective programs across VHA. (Geriatrics and Palliative Care)

**Dr. Barrett Bowling** received the American Geriatrics Society 2024 Thomas and Catherine Yoshikawa Award for Outstanding Achievement in Clinical Investigation. (Geriatrics and Palliative Care)



**Dr. David Schlientz** is participating in the Institute for Healthcare Improvements Age-Friendly Health Scholars program. (Geriatrics and Palliative Care)

The Triangle Society of Hospital Medicine honored **Drs. Tara Spector** and **Pooh Setji** for Clinical Leadership for Physicians, Dr. Poonam Sharma for Excellence in Teaching, **Dr. Lana Wahid** for Excellence in Research, **Dr. Noel Ivey** for Best vignette, and **Dr. David Gallagher** for Outstanding Service in Hospital Medicine. (General Internal Medicine)

**Dr. Sharon Rubin** was honored with a Mastership in the American College of Physicians. (General Internal Medicine)

**Dr. Lori Orlando** co-presented at the Young President's Organization with Dr. Loren Walenski of Harvard University on precision medicine health and wellness. (General Internal Medicine)

**Dr. Laura Barisoni** received the Jacob Churg Award from the Renal Pathology Society. (Nephrology)

**Dr. Stephen Balevic** was appointed the Director for Pharmacometrics and Fit-for-Purpose Trials at the Duke Clinical Research Institute. (Rheumatology)

**Dr. Jen Rogers** was named Vice President of the North Carolina Rheumatology Association. (Rheumatology)

**Dr. Rebecca Sadun** was appointed Associate Director of Duke AHEAD (Academy for Health Professions Education and Academic Development). (Rheumatology)

**Dr. Jim Howard** was awarded the Hospital Medicine Education Award. (Hospital Medicine)

**Dr. Suchita Sata** was named Editor of the Journal of Hospital Medicine Innovations Corner. (Hospital Medicine)

**Dr. David Shaz** received the Duke Faculty Advancement Seed Grant. (Pulmonary)



**Dr. Bryan Batch** received the National Institutes of Health (NIH) Institutional Excellence in Diversity, Equity, Inclusion, and Accessibility (DEIA) in Biomedical and Behavioral Research Prize for the work accomplished through the Duke-North Carolina Central University Partnership. (Endocrinology)

**Drs. Joel Boggan and Karen Goldstein** were recognized for their work presented at the Society of General Internal Medicine annual meeting, both earning the Best Oral Abstract Award. (General Internal Medicine)

## In Memoriam



**Dr. Kimberley Evans,**  
Professor of Medicine,  
1973-2023 (Nephrology)



**Dr. Phuong Doan**  
Associate Professor of Medicine,  
1977-2023 (Hematologic Malig-  
nancies & Cellular Therapy)



**Dr. Michael McLeod**  
Professor Emeritus and  
former chief resident,  
1935-2024 (Gastroenterology)



# Department of Medicine

Duke University School of Medicine

Attn: Director of Communications  
DUMC Box 3703  
40 Medicine Circle  
Durham, NC 27710

---

## FOLLOW US ONLINE:



@dukemedicine



@dukedeptofmed



@dukedeptofme



medicine.duke.edu

